

# Blackwood Hill Reserve

Concept Design Report

Prepared for:



CITY OF  
MITCHAM

by JPE Design Studio

26022

April 2026  
Revision A

# Contents

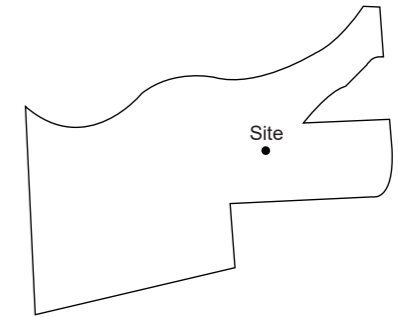
Section	Page
Introduction	3
Site Background	4
Site Context	5
Site Analysis	6
Vision & Design Principles	7
Site Access and Circulation	8
Landscape Concept Plan - Option A	9
Landscape Concept Plan - Option B	10
Materials and Furniture	11
Planting Palettes	12

## Acknowledgment of Country

We acknowledge the Traditional Custodians of the Country on which Blackwood Hill Reserve sits, the Kaurna people. We thank them for their care and custodianship of this beautiful, fragile yet resilient and interconnected Country. We pay our respects to Elders, past, present and those yet to emerge. We thank and acknowledge the time and generosity that the Traditional Custodians and our First Nations collaborators have given us, and for sharing their knowledge and providing guidance.

# Introduction

JPE Design Studio were engaged by the City of Mitcham (CoM) to develop two concept designs for Blackwood Hill Reserve. The purpose of the designs are to propose an alternative location, to the popular Blackwood Football Oval, for the local community to walk their dogs. The designs aim to provide improved shade, visual amenity and be environmentally responsive to the existing ecological communities.



Blackwood Hill Reserve



Figure 1 Site Visit 20260320

# Site Background

The history of Blackwood Hill Reserve is defined by five distinct “layers” of land use, moving from traditional ownership to industrial utility and finally to environmental conservation.

## Kaurna Custodianship (Pre-1840s)

The site’s earliest history belongs to the Kaurna people, the traditional owners. This period represents the land in its original state, characterized by Grey Box Woodland and diverse native fauna before the introduction of European farming practices.

## Early Settlement (1840s–1922)

Colonial settlement began with the Elsegood family building a stone farmhouse in 1856 on Section 1047. The arrival of the railway later increased development potential.

The Arrival of the Railway: In the late 19th century, the proximity to the new railway made the land attractive to developers, shifting its value from pure agriculture to potential suburban expansion.

## The Industrial & Slaughterhouse Era (1923 – 1957)

Perhaps the most unique period of the site’s history, it was dominated by the Jones family’s butchery operations. Livestock Movement: Sheep and cattle were driven directly from the Blackwood Railway Station through local streets into holding yards on the reserve.

## Transition to Public Recreation (1958 – 1992)

The site was purchased by the City of Mitcham in 1958. The original farmhouse was demolished in 1965, and the land saw rapid change as the Blackwood Football and Cricket Clubs moved to the adjoining oval.

## Environmental Restoration & Heritage (1993 – Present)

This era focuses on repairing past environmental damage through revegetation and weed removal, while formally recognising and protecting the site’s ecological and historical value. At the same time, elements like the History Table preserve a tangible link to its residential past, creating a balance between restoration and commemoration.

<https://www.weekendnotes.com/blackwood-hill-reserve/>  
[https://www.mitchamcouncil.sa.gov.au/\\_data/assets/pdf\\_file/0026/1153457/Tabling-Our-Heritage.pdf](https://www.mitchamcouncil.sa.gov.au/_data/assets/pdf_file/0026/1153457/Tabling-Our-Heritage.pdf)  
[https://www.mitchamcouncil.sa.gov.au/\\_data/assets/pdf\\_file/0039/89859/blackwood\\_hill\\_reserve.pdf](https://www.mitchamcouncil.sa.gov.au/_data/assets/pdf_file/0039/89859/blackwood_hill_reserve.pdf)



Figure 2 Aerial photograph 1936

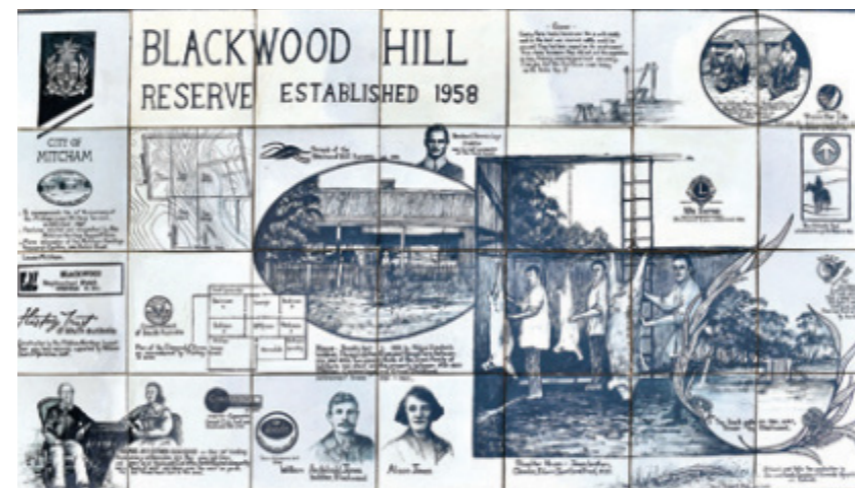


Figure 3 Blackwood Hill Reserve Tiled Table



Figure 4 Jones Resident

# Site Context

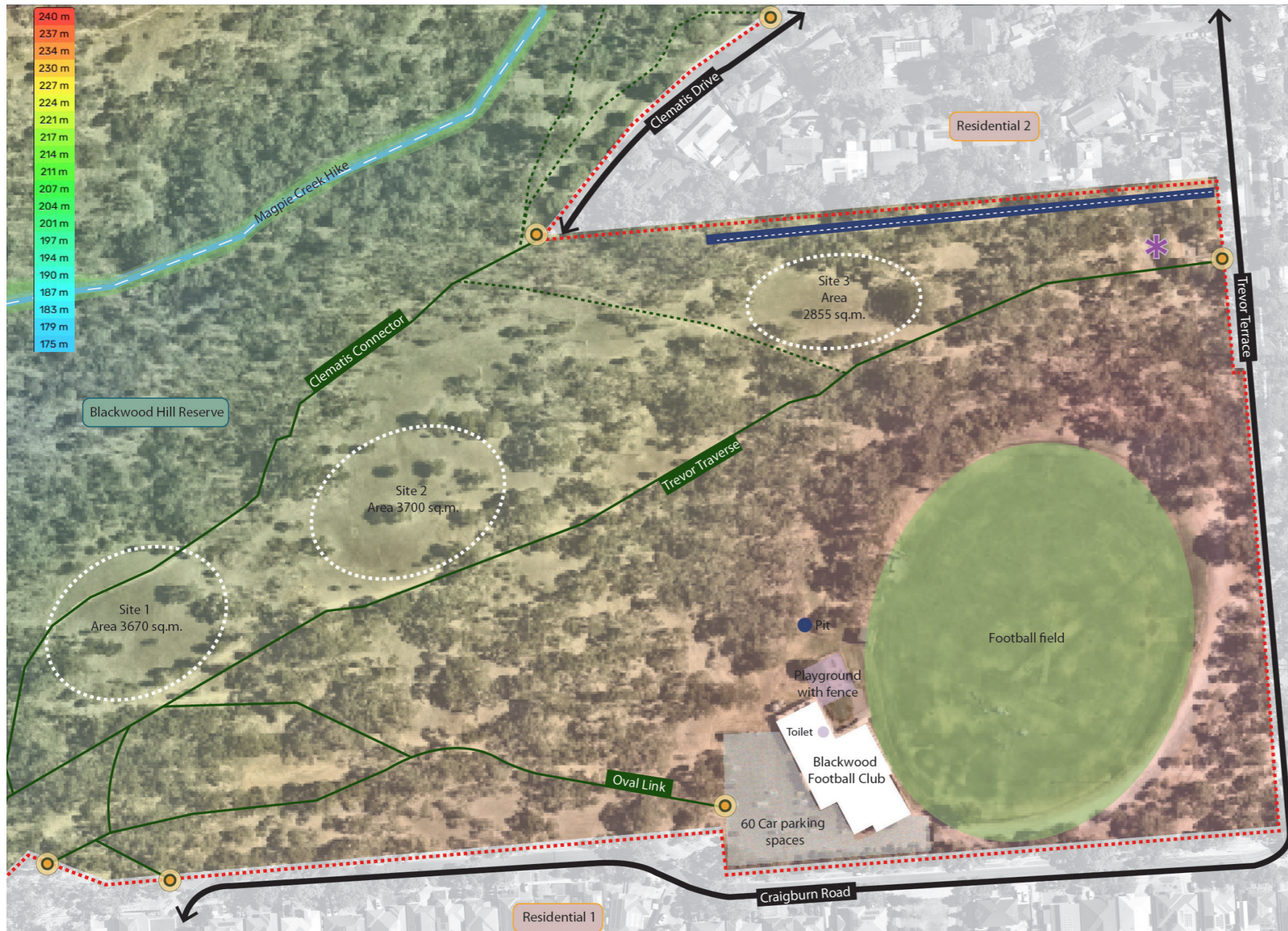


Figure 5 Site Context and Site Options

- - - Boundary Line
- Primary Path
- - - Secondary Path
- Parking
- Park Entry
- \* Historical Area (Jones Residence)
- Drainage
- Facility
- Lawn
- Building
- Road



## Site Selection

Criteria	Site 1
Size	3670 sq.m.
Access	Oval & Craigburn Road Trails
Parking	Street and 60 car parking spaces
Topography	Flat
Shade	Open (Limited)
Facilities	Far (>5 mins / 400m.)
Distance	Close to Residential 1

Criteria	Site 2
Size	3700 sq.m.
Access	4 multi-trail connectors
Parking	Street and 60 car parking spaces
Topography	Semi-Flat
Shade	Mature trees (High)
Facilities	Close to Club facilities
Distance	Between Residential 1 & 2

Criteria	Site 3
Size	2800 sq.m.
Access	Trevor Tce & Clematis trails
Parking	Poor (Far from parking)
Topography	Flat
Shade	Open (Limited)
Utilities	Close to Club facilities
Distance	Close to Residential 2

### Preferred Option: Site 2

It offers the largest space, best trail connectivity, existing mature trees that provide shade, and the good proximity to facilities while maintaining sufficient distance from residential areas to minimise noise from the dog park.

# Site Analysis

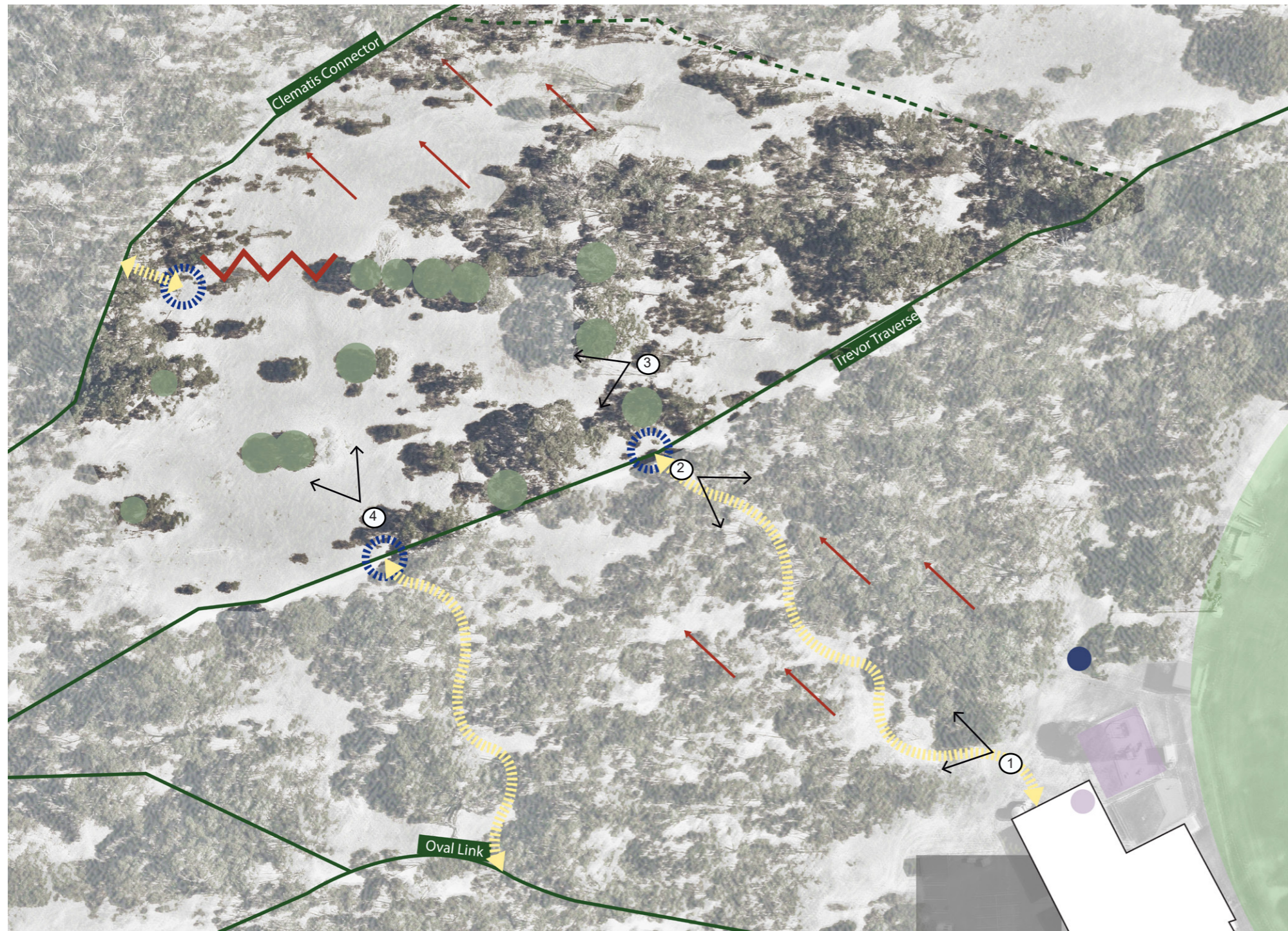


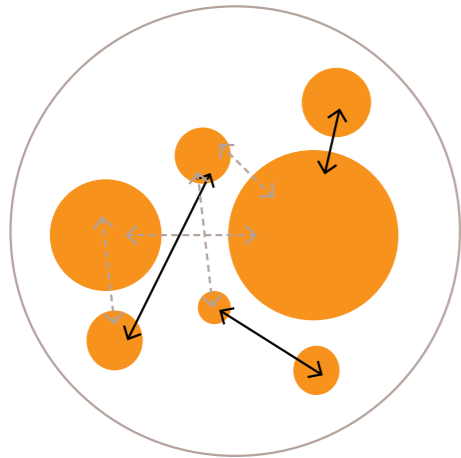
Figure 6 Site Analysis

- |                           |                              |          |                 |
|---------------------------|------------------------------|----------|-----------------|
| Slope                     | Significant Tree (>2m Trunk) | Lawn     | Potential Entry |
| Potential Path Connection | Primary Path                 | Facility | Buffer          |
| Parking                   | Secondary Path               | Building | Pit             |



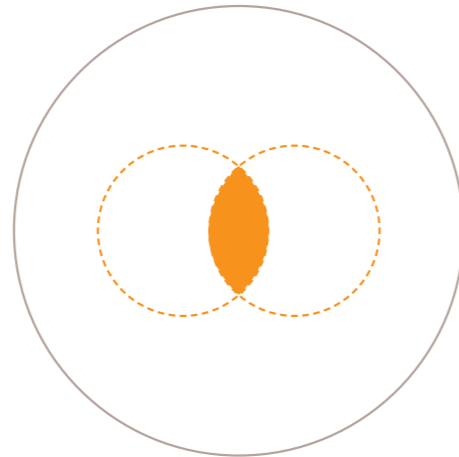
# Vision and Design Principles

Blackwood Hill Reserve is to be a series of connected, clearly zoned, amenity-rich shared spaces that support dog exercise, protect the existing ecology and integrate seamlessly within it's context.



A Legible and Connected Place

Interconnected paths and spatial sequences that encourage exploration.



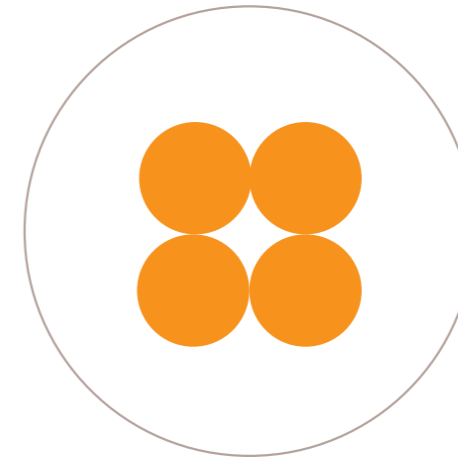
Co-existence

Spaces are designed to support both people and dogs



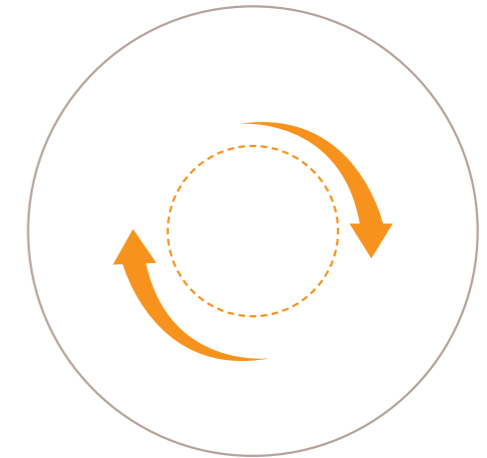
A Variety of Experiences

Engagement in a variety of ways including walking loops, off-leash open space, jumping, digging, sniffing and passive recreation



Identity

The design draws on the site original history of Grey Box Woodland



Support & Improve Ecological Systems

Support and improve the ecological system by restoring native habitats and enhancing biodiversity.

# Site Access and Circulation

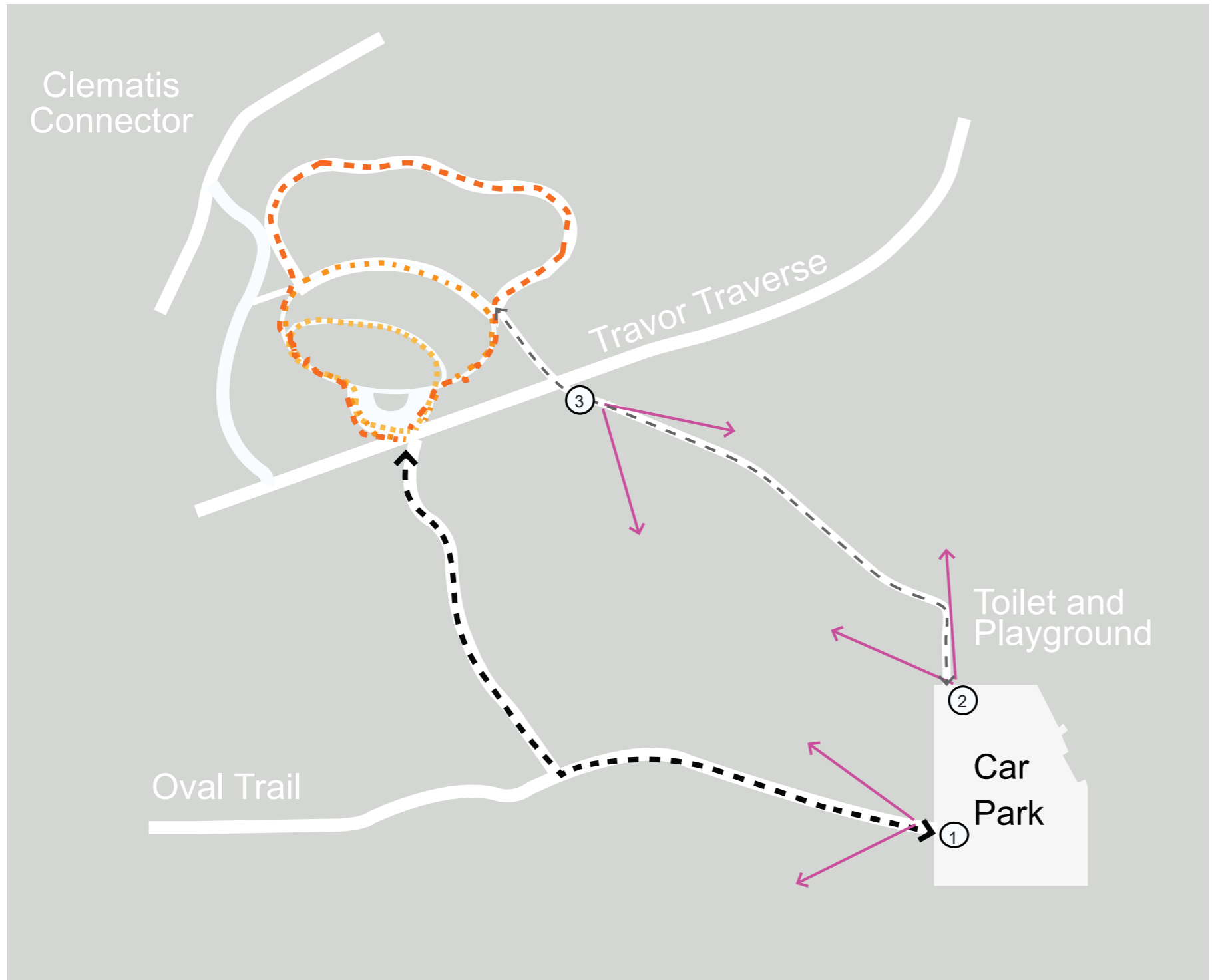


Figure 7 Proposed access and walking loops

**Access**  
 ← - → Primary path (200m)  
 ← - → Secondary (160m)

**Circulation/ walking loops**  
 100m  
 200m  
 300m

# Concept Design A

Natural



## Legend

- 1 Main Entry/ Site Information
- 2 Tail Community (off-leash)
- 3 Track Agility
- 4 Trace Dig Pit
- 5 Trace Sniffari Garden
- 6 Dog Amenities Area (water, bin, and bags)

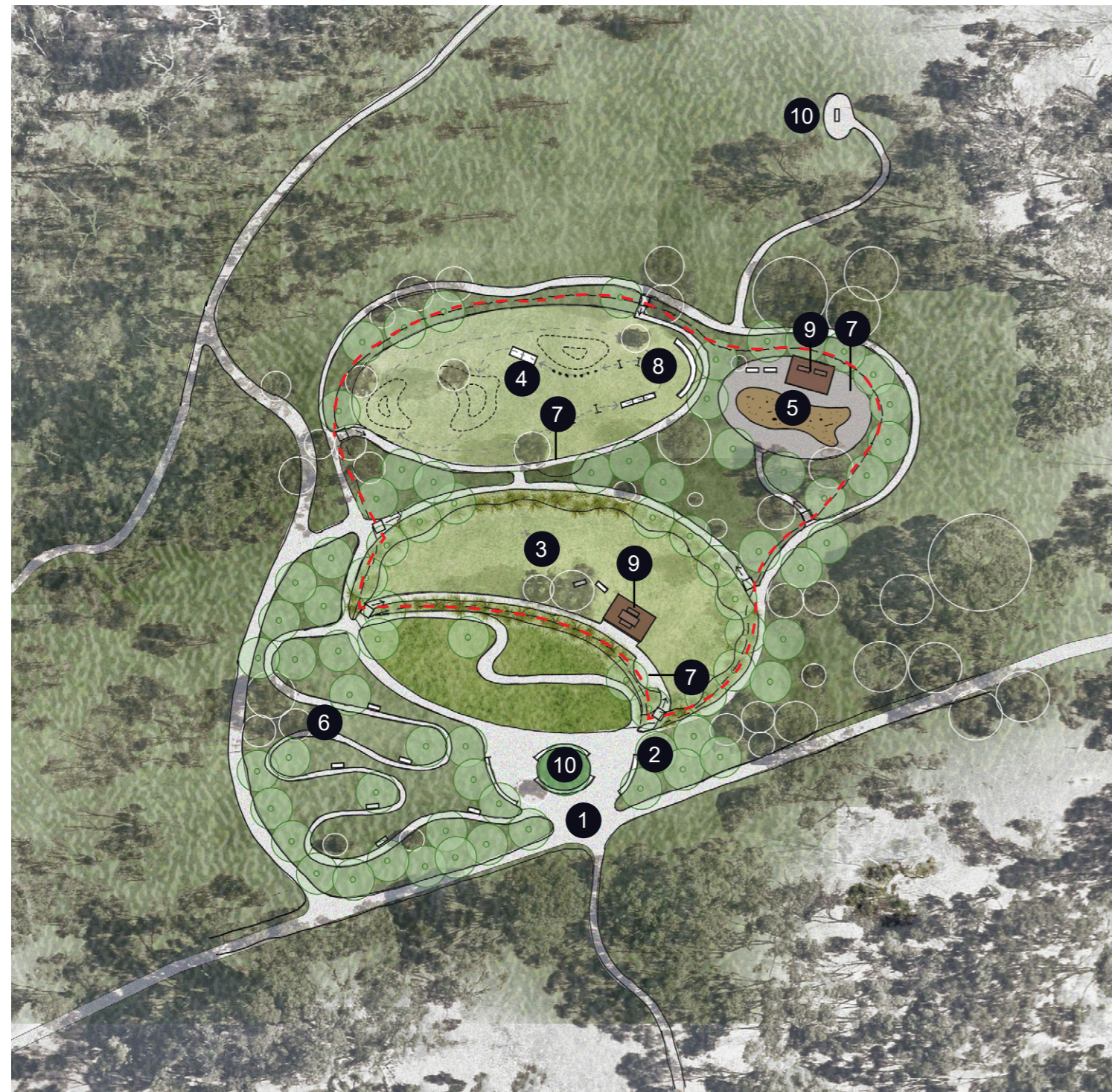
- Existing Tree
- Proposed Tree
- Native Grass Mix
- Irrigated Lawn
- Shrubs (Providing a barrier)
- Compact Granitic Gravel
- Seat Logs
- Picnic Table
- Mound



Figure 8 Landscape Plan - Concept A

# Concept Design B

Natural with fencing and additional features



## Legend

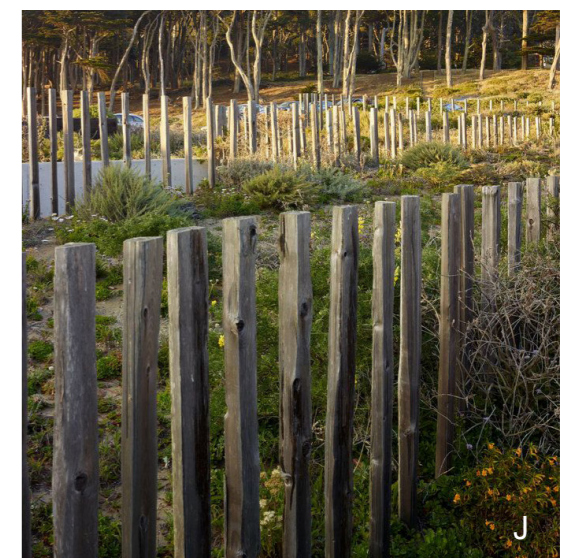
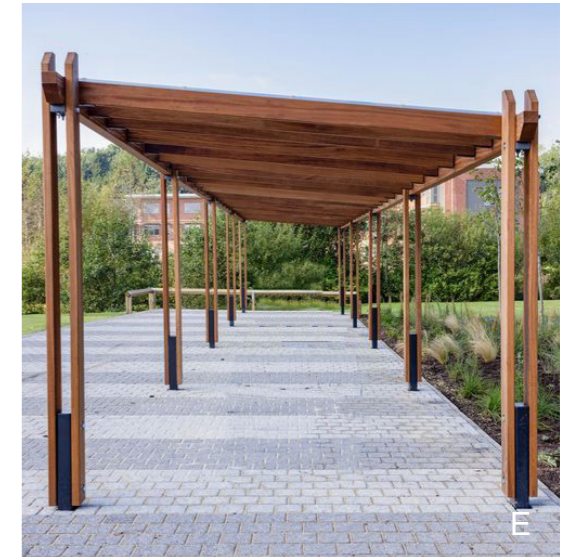
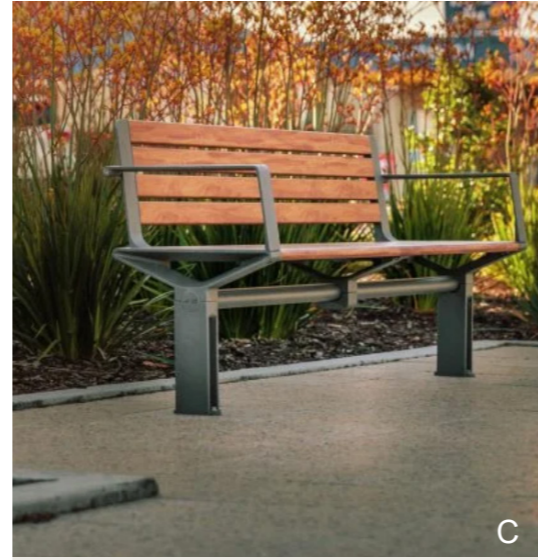
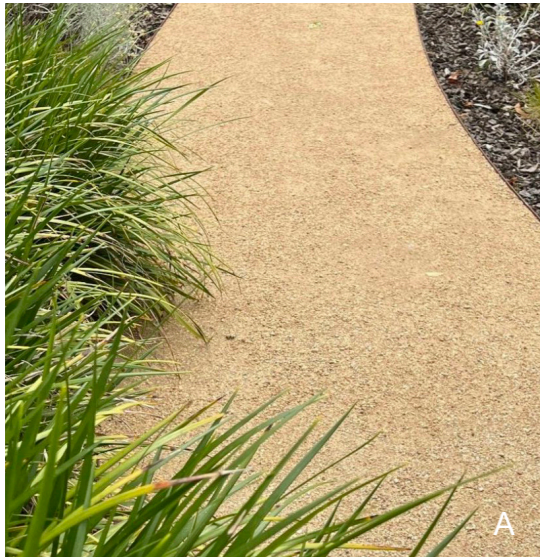
- 1 Main Entry/ Site Information
- 2 BBQ Area
- 3 Tail Community (off-leash)
- 4 Track Agility
- 5 Trace Dig Pit
- 6 Trace Sniffari Garden
- 7 Dog Amenities Area (water, bin, and bags)
- 8 Amphitheatre
- 9 Pavilion
- 10 View Point

- Fence
- Existing Tree
- Proposed Tree
- Native Grass Mix
- Irrigated Lawn
- Shrubs
- Compact Granitic Gravel
- Washed Sand
- Mulch Area
- Seat
- Picnic Table
- Mound
- Pavilion
- Gate



Figure 9 Landscape Plan - Concept B

# Materials and Furniture



A. Compacted granite - paths

B. Timber edging

C. Seat (Aria - Street Furniture Australia)

D. Picnic Table (Aria - Street Furniture Australia)

E. Shelter - timber

F. Circular concrete bench

G. Timber logs

H. Tunnel (recycled/ propriety)

I. Timber/ Recycled Agility

J. Low recycled timber fence (1.2m)

# Planting Palette



A



B



C



D



E



F



G



H



I



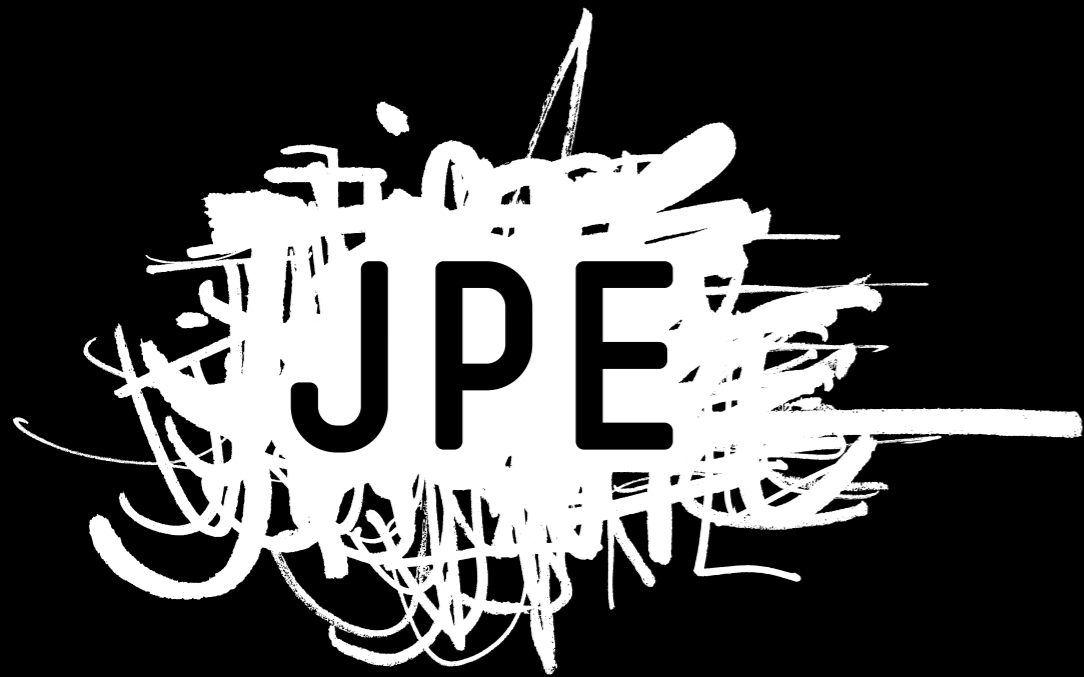
J

## Greybox Woodland species

- A. *Eucalyptus microcarpa*
- B. *Eucalyptus melliodora*
- C. *Acacia acinacea*
- D. *Astroloma humifusum*
- E. *Dianella revoluta*
- F. *Lomandra filiformis*

## Sniffari Garden Species

- G. *Tagetes lemmonii*
- H. *Lavandula angustifolia*
- I. *Salvia rosmarinus*
- J. *Trachelospermum jasminoides*



# **JPE Design Studio**

Architecture | Interior Design | Landscape Architecture | Urban Design

[www.jpe.com.au](http://www.jpe.com.au)

(08) 8406 4000

Level 4/19 Gilles Street,  
Adelaide SA 5000